

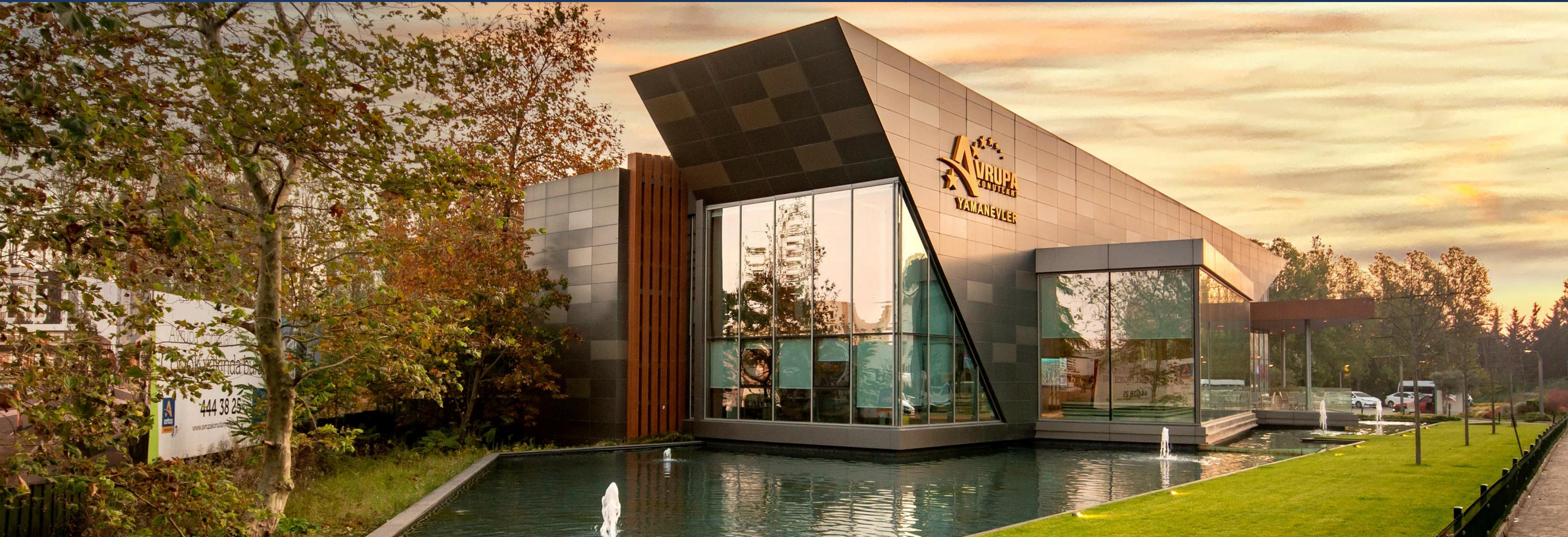


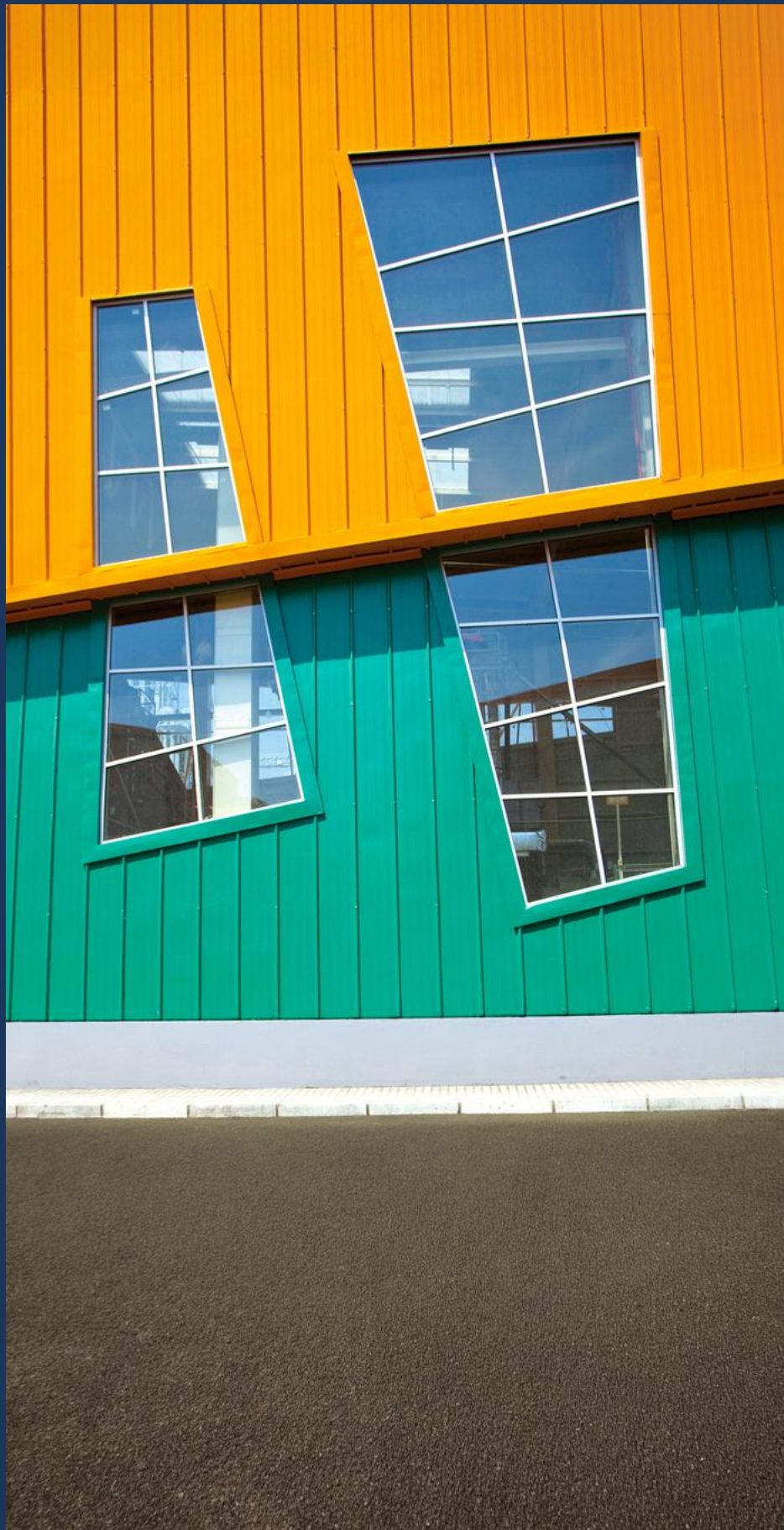
**NATURA**  
FACADE | INTERIOR SOLUTIONS





**By combining engineering and aesthetics, we are bringing the facades of the future to the world of architecture.**





Our goal is to develop solutions for facade systems that address **project-specific engineering, energy efficiency, carbon reduction, and architectural aesthetics** as a whole.



## At Natura Yapı, we don't limit our work to interpreting visible forms.

We have never viewed the facade as merely an aesthetic shell; for us, the facade is a strategic engineering area that determines the building's safety, comfort, energy efficiency, and user experience. In every project, we respect architectural design and, instead of ready-made solutions, we bring the design to life in its purest and most accurate form with engineering details developed specifically for the building's needs.

Natura Yapı is an integrated engineering structure that manages the entire process from design to production and from site to delivery; it places technology at the heart of production and makes quality measurable and sustainable through certification processes compliant with international standards. We see sustainability as a natural consequence of sound engineering, and with our team that uses knowledge effectively and takes responsibility, we position ourselves as a reliable solution partner in local and international projects.

Employee development is an integral part of Natura's sustainable success. We support the technical, personal, and professional development of our teams; we encourage a culture of training, knowledge sharing, and continuous learning. We believe in growing together, producing together, and creating value together.

Our future goal is clear: to create projects that combine the aesthetics of architecture with the precision of engineering, defining structures not only by their form but also by the value that lies beyond it.

For me, the real value lies in the engineering behind the form, in the details, and in the structure's performance over the years.

This perspective is perfectly encapsulated in a single phrase: Beyond Form.

**CEO Bekir Sahin**

**500+**  
**PROJECTS**



**25+**  
**INDUSTRY EXPERIENCE**  
**years**





In every project, we prioritize **technical accuracy, aesthetic balance, and environmental responsibility.**

We respect the architectural vision and **enhance it with engineering.**

We develop solutions tailored to each building's unique story, design purpose, and urban context. By placing sustainability at the heart of our engineering approach, we minimize environmental impact through energy-efficient systems, recyclable materials, and low-carbon production processes.

We make a difference with technology, continuously measuring and improving our performance through CNC-based manufacturing, intelligent modeling (BIM), and processes compliant with international certifications.

We prioritize reliability and build long-term, mutually trusting partnerships with our clients. We embrace innovation, bringing a fresh perspective to engineering and a new approach to architectural aesthetics to every project.





## Completed application volume

140 football fields

Each **facade** and **interior** space is the size of **140 calculated football fields**; it is the sum of Natura's engineering, aesthetic and sustainability philosophy.



# PROJECT JOURNEY

**At Natura, the Project Journey** takes a holistic approach to architectural ideas, encompassing project management, design and engineering, and production and implementation processes. Natura **guarantees quality, continuity, and reliability by managing every stage of this journey from a single center.**

# 1



## PROJECT MANAGEMENT

Process Planning and Coordination  
Interdisciplinary Communication  
Time, Budget and Risk Management

# 2



## DESIGN AND PERFORMANCE

Concept and Detail Design  
Engineering Analyses  
System Optimization

# 3



## PRODUCTION

Pre-production and Supply  
CNC-based Manufacturing  
Quality Control and Certification.

# 4



## INSTALLATION

Logistics and Shipment Planning  
Fast and Controlled Assembly  
On-Site Inspection and Delivery

# 1



## PROJECT MANAGEMENT



### Process Planning and Coordination

All phases of the project design, production, and implementation are planned and managed in a synchronized manner.



### Interdisciplinary Communication

A transparent and effective communication infrastructure is established among architects, engineers, investors, and implementation teams.



### Time, Budget and Risk Management

In line with project objectives, timelines, costs, and potential risks are continuously monitored and controlled.

# 2



## DESIGN AND PERFORMANCE



### Concept and Detail Design

System solutions are developed that integrate aesthetics and functionality while remaining true to the architectural vision.



### Engineering Analyses

Facade systems are verified through engineering calculations based on static, thermal, wind, and performance criteria.



### System Optimization

Systems are optimized for efficiency by balancing design, cost, and performance.

# 3



## PRODUCTION



### Pre-production and Supply

The entire production process is planned specifically for each project; the right materials are sourced at the right time.



### CNC-based manufacturing

High-precision CNC manufacturing technologies ensure quality, dimensions, and consistency.



### Quality Control and Certification

All systems produced are tested and certified in accordance with national and international standards.

# 4



## INSTALLATION



### Logistics and Shipment Planning

All logistics processes, from production to delivery, are organized to support the speed of implementation.



### Fast and Controlled Assembly

Thanks to the advantage of pre-production, on-site labor and time are minimized, ensuring safe assembly.



### Site Inspection and Handover

The implementation process is supervised and delivered flawlessly in accordance with Natura Facade standards.



# OUR PRODUCTS

OUR ARCHITECTURAL SYSTEMS

**Our products** consist of systems that combine architectural vision with engineering, offering holistic solutions to the aesthetic, performance, and functionality needs of a building. Each is designed to adapt to different scales and typologies, adding value to the project as **integrated** and **long-lasting architectural solutions**.



# Project-Specific Systems

A wide portfolio of systems ranging from curtain walls to window and door systems, sliding and custom solutions, and complex facade geometries.



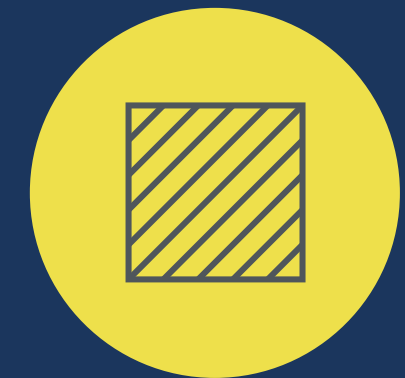
WINDOWS



DOORS



SLIDING & FOLDING SYSTEMS



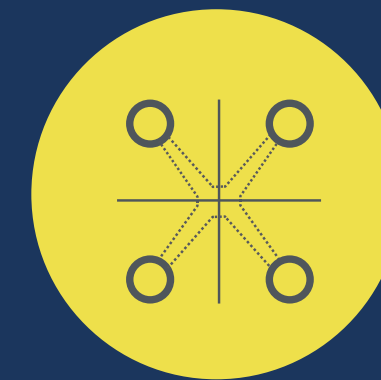
CURTAIN WALL



SUNLIGHTS



FACADE CLADDING



TRANSPARENT FACADES



OTHER



# PRODUCTION FACILITY

Our production facility is structured in accordance with engineering precision and quality standards and equipped with modern production technologies. Thanks to CNC-based production processes and controlled quality management, **project-specific solutions** are **implemented with high accuracy, continuity and efficiency.**

# 7.500 m<sup>2</sup> Indoor Area

In our modern production facility with a 7,500 m<sup>2</sup> indoor area, we carry out high-precision and project-based production for facade systems.



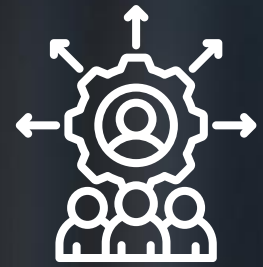
**400** TON/YEAR  
Aluminum Processing Capacity

**GLOBAL**  
MACHINERY PARK





**Natura Facade, with its high-tech production infrastructure, experienced engineering team, and integrated operational structure, has the capacity to manage numerous large-scale projects simultaneously. This capacity represents not only Natura Facade's production power but also its planning, quality control, and site management discipline.**



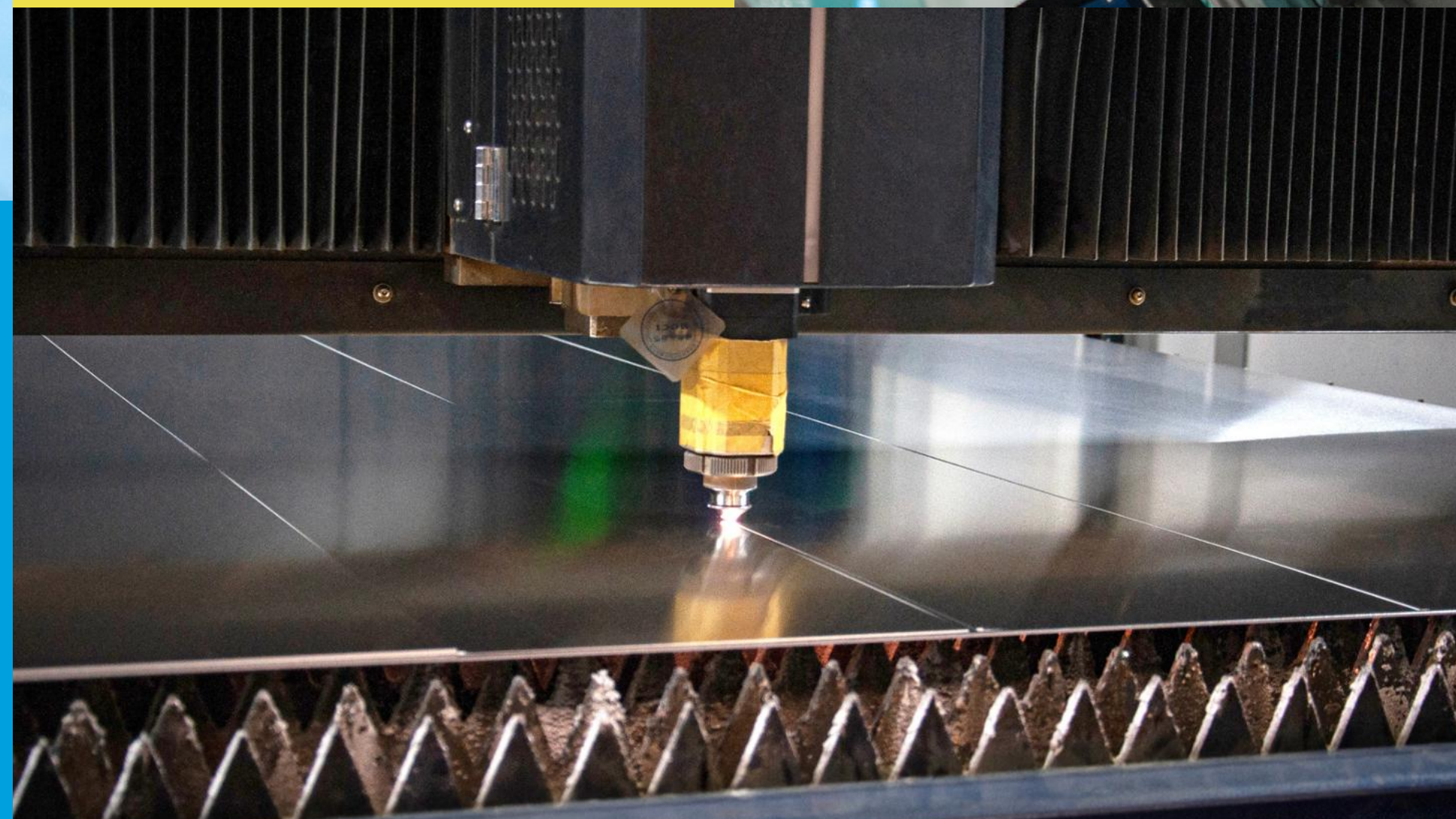
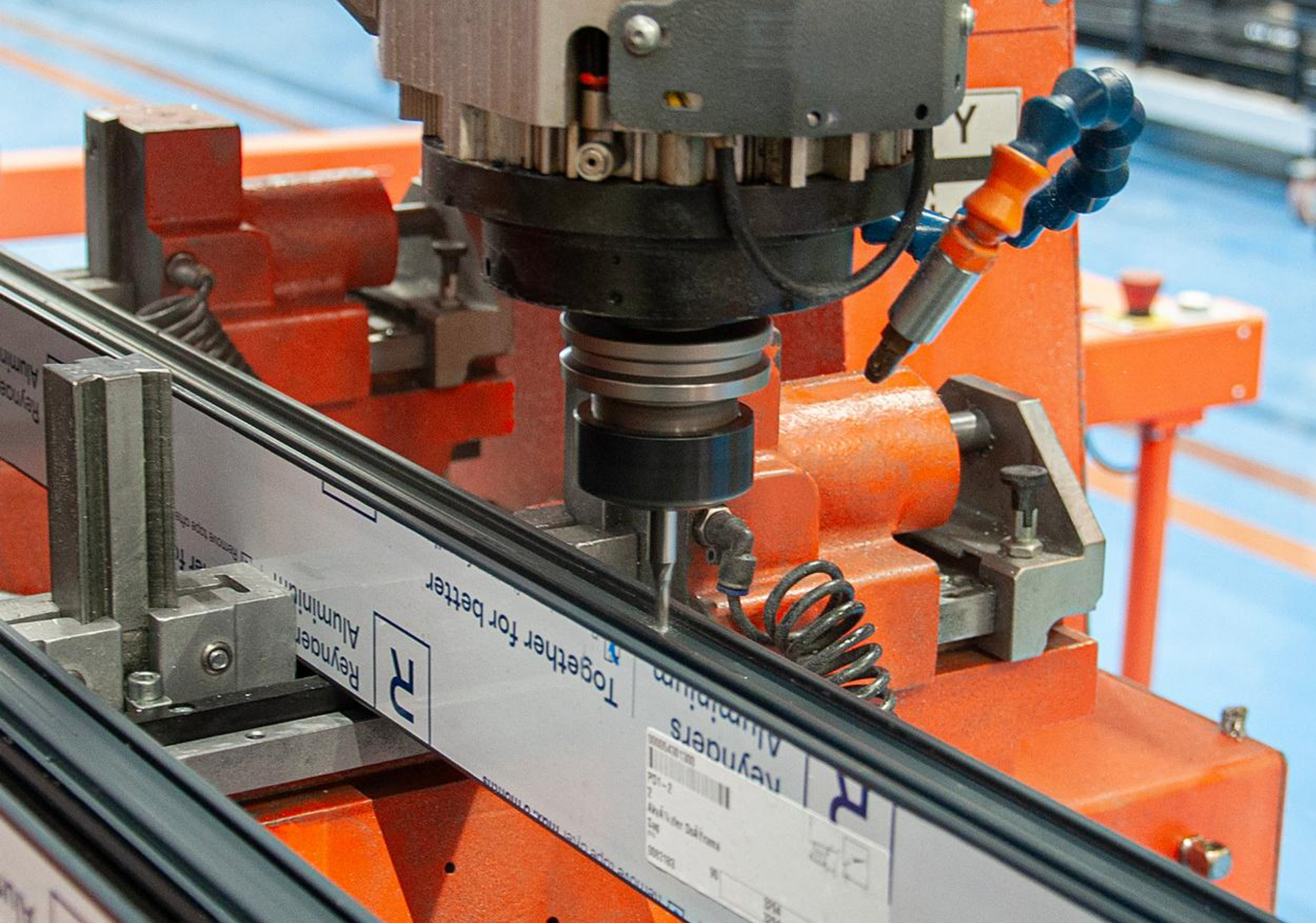
# 120,000 m<sup>2</sup>

Annual Panel Production Capacity

With an annual aluminum processing capacity of 400 tons, it produces doors, windows, curtain walls, and panel facade systems to high quality standards.

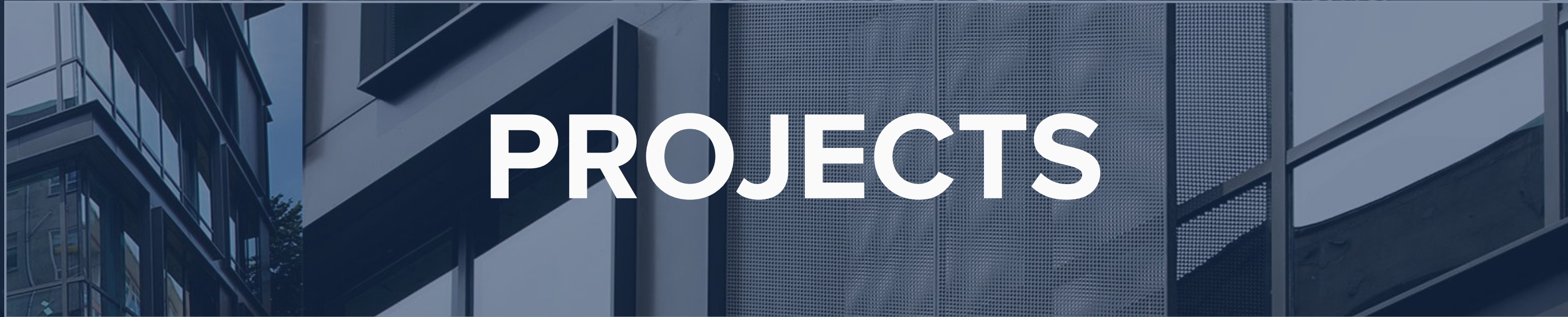






## MODERN TECHNOLOGY

- CNC machining centers, automated cutting and pressing systems.
- Manufacturing of anchors, brackets, substructures, and structural components.



# PROJECTS



# IZMIR CITY HOSPITAL PHYSICAL AND REHABILITATION BUILDING

---

**PROJECT** IZMIR CITY HOSPITAL PHYSICAL  
THERAPY AND REHABILITATION  
**LOCATION** BUILDING IZMIR  
**CATEGORY** HEALTH / HOSPITAL  
**YEAR** 2019  
**SCALE** 24,000 sqm  
**CONTRACTOR** MINISTRY OF HEALTH  
**ARCHITECT** TURKERLER HOLDING & GAMA HOLDING

---



IZMIR CITY HOSPITAL PHYSICAL AND REHABILITATION BUILDING



MEDIPOL BAHCELIEVLER HOSPITAL



# MEDIPOL BAHCELIEVLER HOSPITAL

PROJECT MEDIPOL BAHÇELİEVLER HOSPITAL

LOCATION ISTANBUL

CATEGORY HEALTH / HOSPITAL

YEAR 2019

SCALE 18,000 sqm

CONTRACTOR MEDIPOL HEALTH GROUP

ARCHITECT MEDIPOL CONSTRUCTION



MEDIPOL BAHCELIEVLER  
HOSPITAL





# MEDIPOL UNIVERSITY NORTH CAMPUS

---

PROJECT MEDIPOL UNIVERSITY NORTH CAMPUS  
LOCATION ISTANBUL  
CATEGORY EDUCATION  
YEAR 2014  
SCALE 20,000 - 100,000 sqm  
CONTRACTOR MEDIPOL CONSTRUCTION  
ARCHITECT TAGO ARCHITECTURE

---



MEDİPOL  
UNIVERSITY



# TECHNOPARK ISTANBUL

---

**PROJECT** TECHNOPARK ISTANBUL/  
CUBE INCUBATION

**LOCATION** ISTANBUL

**CATEGORY** OFFICE

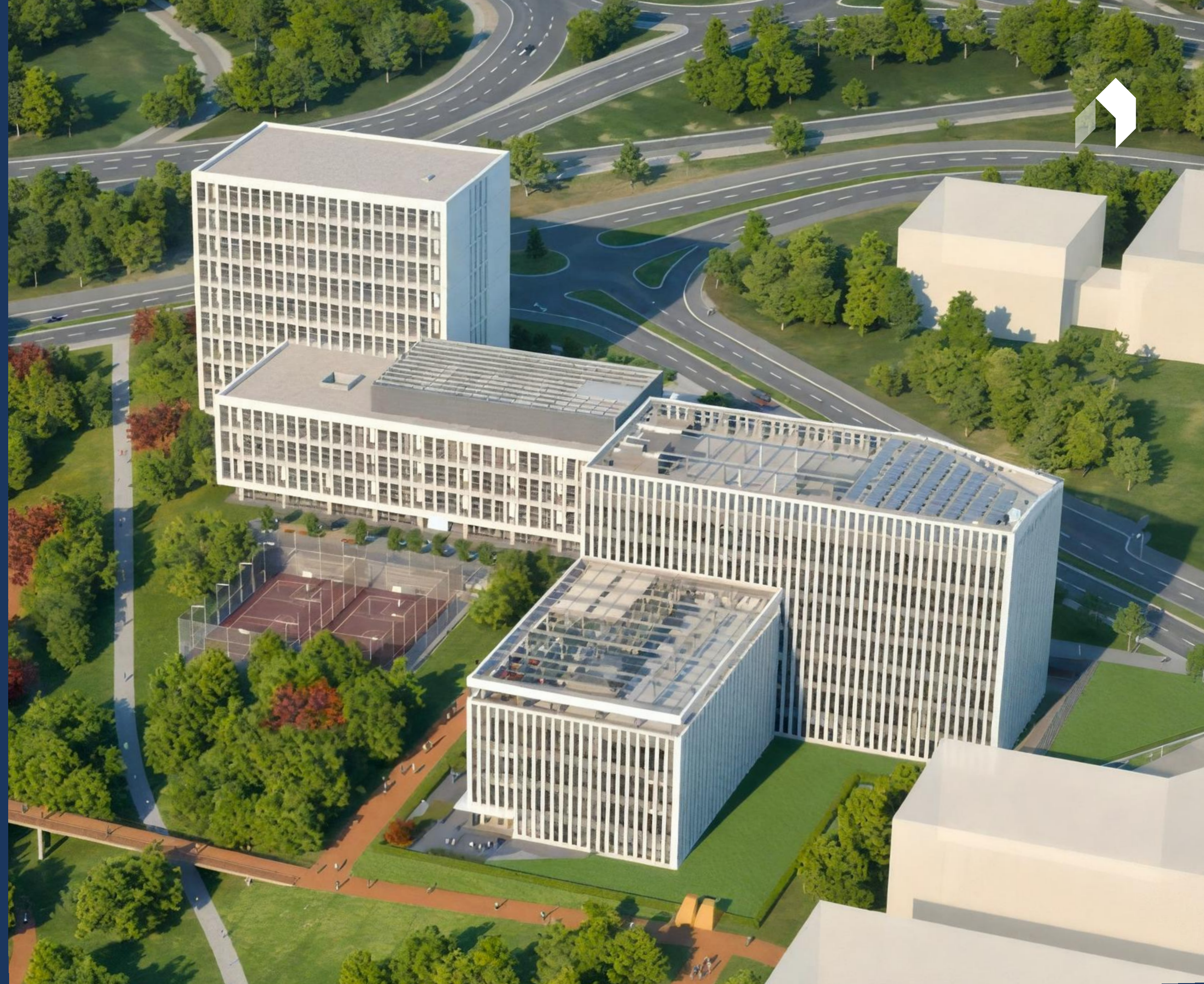
**YEAR** 2019

**SCALE** > 20,000 sqm

**CONTRACTOR** DEFENSE INDUSTRY PRESIDENCY  
AND ISTANBUL CHAMBER OF  
COMMERCE PARTNERSHIP

**ARCHITECT** Assoc. Prof. Dr. Nurbin Paker and  
Assoc. Prof. Dr. Huseyin Kahvecioğlu

---





TECHNOPARK ISTANBUL / CUBE INCUBATION



TECHNOPARK ISTANBUL / CUBE INCUBATION

# MEDIPOL PENDIK HOSPITAL

---

PROJECT MEDIPOL PENDIK HOSPITAL  
LOCATION ISTANBUL  
CATEGORY HEALTH / HOSPITAL  
YEAR 2019  
SCALE 11,000 sqm  
CONTRACTOR MEDIPOL CONSTRUCTION  
ARCHITECT TAGO ARCHITECTURE

---





MEDIPOL PENDIK HOSPITAL



# MERSIN AKKUYU NUCLEAR POWER PLANT SECURITY BUILDINGS

---

**PROJECT** MERSİN AKKUYU NUCLEAR POWER PLANT  
**LOCATION** MERSİN  
**CATEGORY** MEGA-INDUSTRIAL  
**YEAR** UNDER CONSTRUCTION.  
**SCALE** 2600 SQM  
**CONTRACTOR** AKKUYU NUCLEAR INC.  
**ARCHITECT** TITAN 2 İC İCTAS İNC.

---



MERSİN AKKUYU NUCLEAR POWER PLANT



# BAGCILAR MEDİPOL MEGA UNIVERSITY HOSPITAL

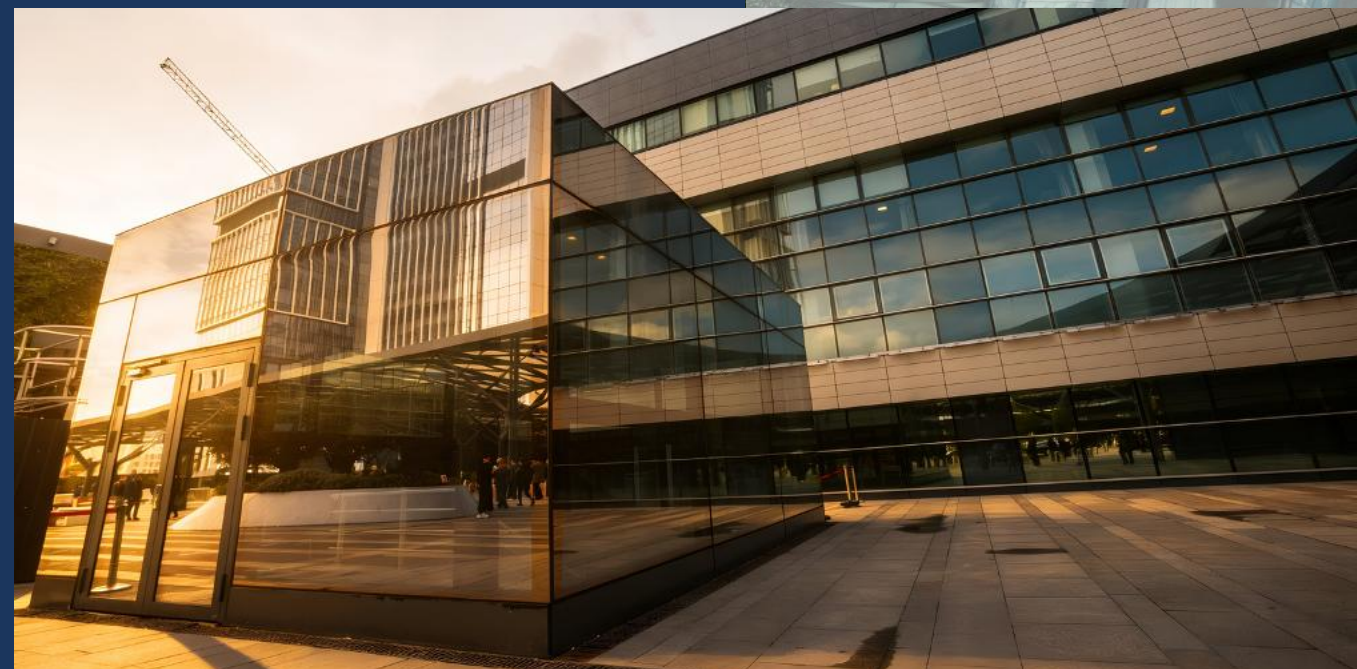
---

**PROJECT** BAGCILAR MEDİPOL MEGA  
UNIVERSITY HOSPITAL  
**LOCATION** ISTANBUL  
**CATEGORY** HEALTH / HOSPITAL  
**YEAR** 2012  
**SCALE** > 20,000 sqm  
**CONTRACTOR** MEDİPOL HEALTH GROUP  
**ARCHITECT** MEDİPOL CONSTRUCTION

---



BAGCILAR MEDIPOL  
MEGA UNIVERSITY  
HOSPITAL



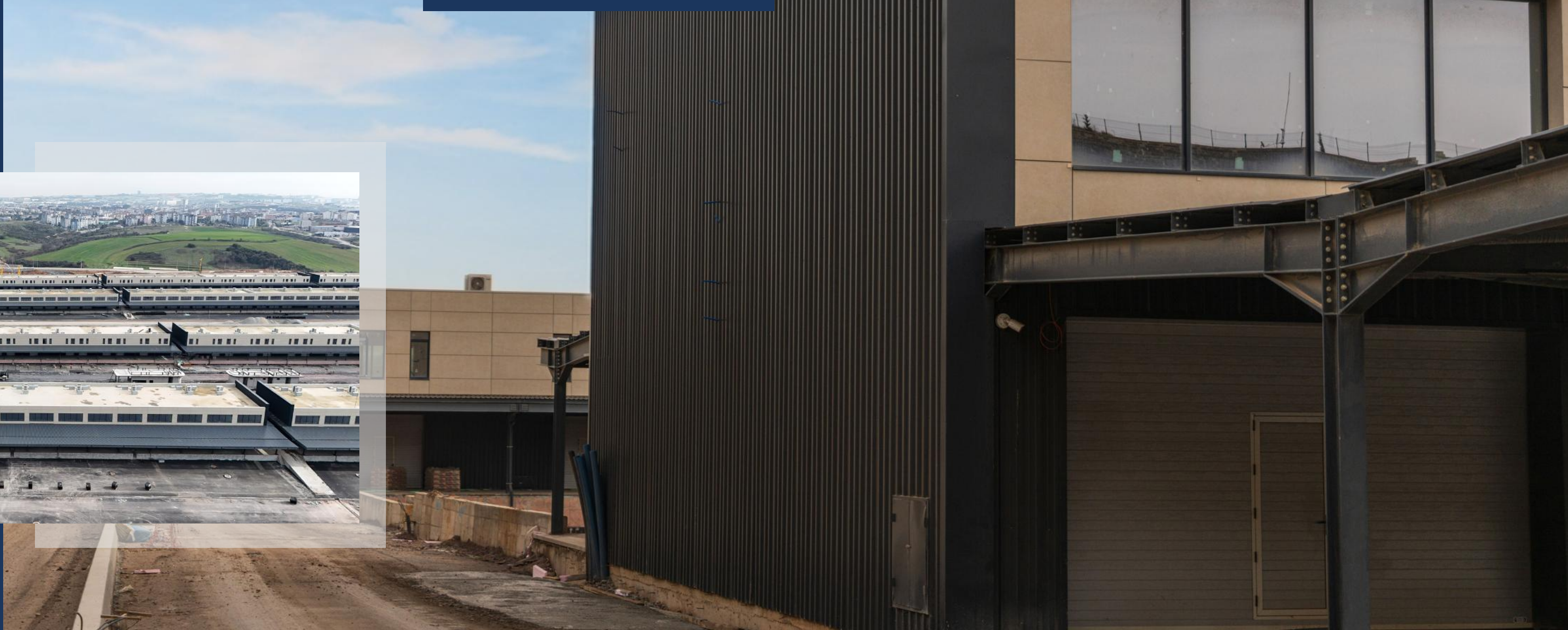


# IBB FRESH FRUIT AND VEGETABLE MARKET

PROJECT ANATOLIAN SIDE FRESH FRUIT  
AND VEGETABLE MARKET  
LOCATION ISTANBUL  
CATEGORY INDUSTRIAL  
YEAR 2024  
SCALE 32,000 sqm  
CONTRACTOR ISTANBUL METROPOLITAN MUNICIPALITY  
ARCHITECT BESTAŞ YAPI & İNTEKAR YAPI



IBB FRESH FRUIT AND VEGETABLE MARKET



# TURKISH TECHNIC



SABIHA GOKCEN AIRPORT  
TURKISH TECHNIC

PROJECT TURKISH TECHNIC SAW  
LOCATION ISTANBUL  
CATEGORY MEGA - INDUSTRIAL  
YEAR 2013  
SCALE >130,000 sqm  
CONTRACTOR YDA CONSTRUCTION  
ARCHITECT AE ARCHITECTURE





SABIHA GOKCEN  
AIRPORT TURKISH  
TECHNIC







TURKISH TECHNIC SAW

# HELIS MORE

---

PROJECT HELIS MORE RESIDENCE

LOCATION ISTANBUL

CATEGORY HIGH-RISE BUILDING

YEAR 2018

SCALE 25,360 sqm

CONTRACTOR HELIS YAPI A.Ş.

ARCHITECT EFEKTA ARCHITECTURE

---





HELIS MORE RESIDENCE

# HAYATTEPE RESIDENCE

---

PROJECT HAYATTEPE RESIDENCE  
LOCATION ISTANBUL  
CATEGORY HIGH-RISE BUILDING  
YEAR 2014  
SCALE 32,000 sqm  
CONTRACTOR OZAK GYO  
ARCHITECT TAGO BUILDING

---





HAYATTEPE RESIDENCE

# VOLUME ISTANBUL



PROJECT VOLUME ISTANBUL  
LOCATION ISTANBUL  
CATEGORY MIXED USE  
YEAR 2018  
SCALE 2,000 - 20,000 sqm  
CONTRACTOR CALISKAN INSAAT  
ARCHITECT VERTEBRA STUDIO



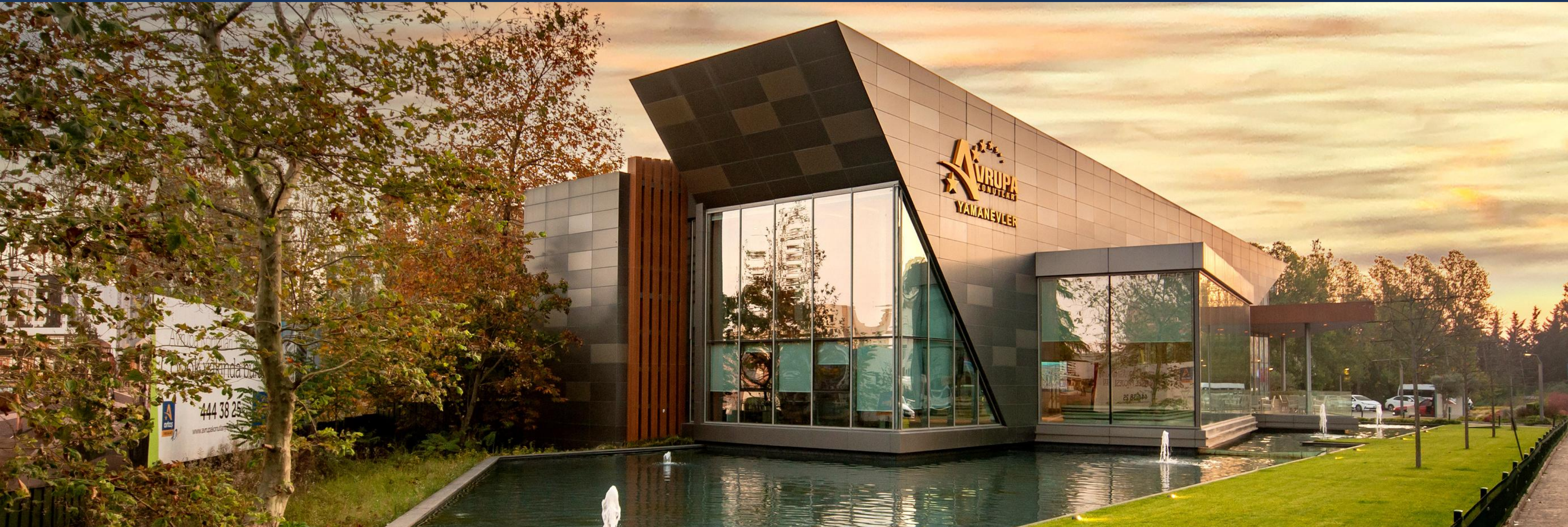


VOLUME ISTANBUL



# EUROPEAN HOUSING

PROJECT EUROPEAN HOUSING YAMANEVLER  
LOCATION ISTANBUL  
CATEGORY SALES OFFICE  
YEAR 2018  
SCALE 2,000 - 10,000 sqm  
CONTRACTOR ARTAŞ YAPI İNŞAAT  
ARCHITECT SABRİ PAŞAYİĞİT, SPDO





EUROPEAN HOUSING



# KASABA MODERN

PROJECT KASABA MODERN  
LOCATION ISTANBUL  
CATEGORY VILLA  
YEAR UNDER CONSTRUCTION  
SCALE >30,000 sqm  
CONTRACTOR İŞ GYO / TECİM





KASABA MODERN



KASABA MODERN



# WORLDWIDE

FACADE AND INTERIOR SOLUTIONS

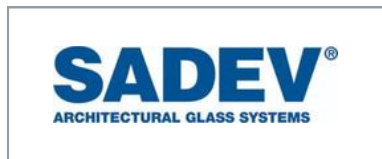
## National & International Location

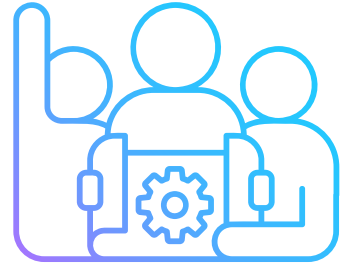
Natura Facade, a reliable solution partner, combines local expertise with **international standards** and global business practices.





# OUR SOLUTION PARTNERS





## OUR TECHNICAL TEAM



CIVIL ENGINEER  
**ERAY TUMER**  
ITU CIVIL ENGINEERING



ARCHITECT  
**MERT OKUROGLU**  
ITU ARCHITECTURE



ARCHITECT  
**DILSAT DERELI**  
KADIR HAS ARCHITECTURE



CIVIL ENGINEER  
**OZGUR OZCAN**  
ITU CIVIL ENGINEERING



ARCHITECT  
**DILA KARATAŞ KAHREMAN**  
ANADOLU UNIVERSITY  
ARCHITECTURE



ARCHITECT  
**ARIF TAHTALI**  
GTU ARCHITECTURE



ARCHITECT  
**MELTEM SAHIN**  
YILDIZ TECHNICAL  
UNIVERSITY



INDUSTRIAL ENGINEER  
**ISHAK TEOMAN SAHIN**  
MALTEPE UNIVERSITY



PROJECT CONTROL  
**M. ALP GÜLMEZ**



PRODUCTION MANAGER  
**EMRULLAH SELVI**



MACHINE TECHNICIAN  
**ESRA YAVUZ**



QUALITY CONTROL SUPERVISOR  
**BARTU NALBANTOGLU**



 [info@naturayapi.com](mailto:info@naturayapi.com)

 [www.naturayapi.com](http://www.naturayapi.com)

 +90 216 398 96 00

